

Wildflower School WildScape Project Design

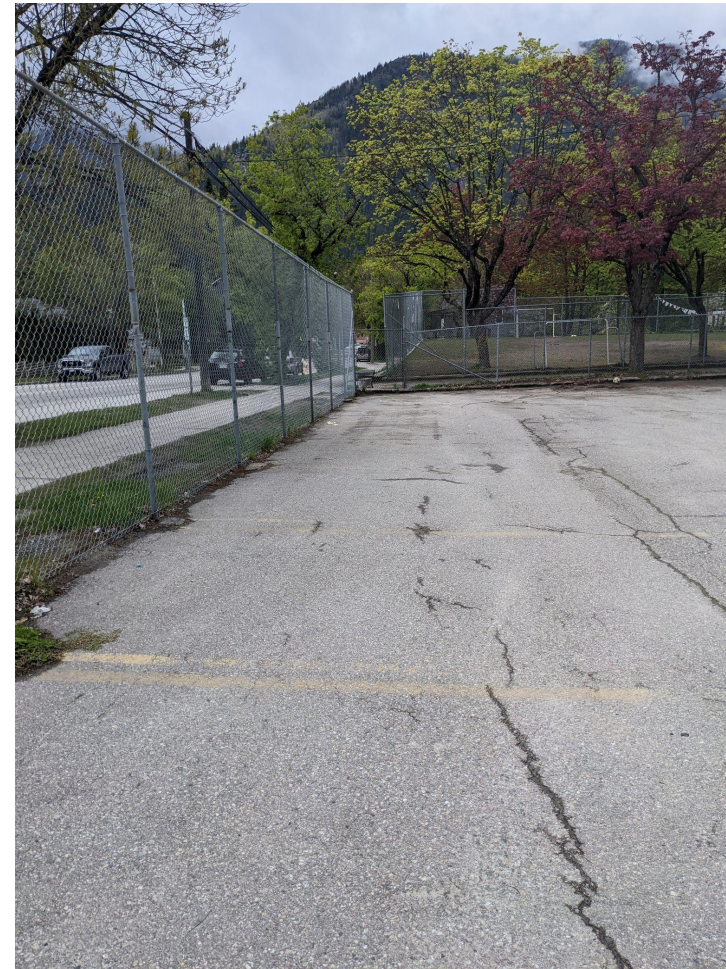
MAY 2022 DRAFT



Image by Tobias Gray

Current Space:

SD8 Concrete
Parking Lot



Proposed Changes:

Reduce parking area

Establish ball hockey and basketball court

Create a 2-metre tall, natural playground hill

Establish perennial gardens around perimeter, with nooks for students to sit and play

Create gathering circle as a central outdoor teaching space

RAIN GARDEN

- 1 - Basketry Willow
- 2 - Red Flowering Currant
- 3 - Wild Bee Balm
- 4 - Echinacea
- 5 - Daylily
- 6 - Switchgrass
- 7 - Autumn Sneezeweed
- 8 - Aster
- 9 - Columbine
- 10 - Western Honeysuckle

NATIVE PLANT GARDEN

UNDERSTORY

- 1 - Kinnikinnick
- 2 - Silky Lupine
- 3 - Wild Strawberry
- 4 - Brown Eyed Susan
- 5 - Western Yarrow
- 6 - Balsam Sunflower
- 7 - Western Goldenrod
- 8 - Douglas Aster
- 9 - Showy Milkweed
- 10 - Soopalalie

CANOPY

- 1 - Red Osier Dogwood
- 2 - Beaked Hazelnut
- 3 - Blue Elderberry
- 4 - Ocean Spray
- 5 - Saskatoon
- 6 - Tall Oregon Grape
- 7 - Mock Orange
- 8 - Nootka Rose



SENSORY HERB GARDEN

- 1 - Currants
- 2 - High Bush Cranberry
- 3 - French Sorrel
- 4 - Oregano
- 5 - Mint
- 6 - Tarragon
- 7 - Creeping Thyme
- 8 - Lemon Balm
- 9 - Anise Hyssop
- 10 - Walking Onions
- 11 - Chives
- 12 - Purple and White Sage
- 13 - Lavender
- 14 - Catnip
- 15 - Catmint

DRYLAND FLOWER GARDEN

- 1 - Red-stem Ceanothus
- 2 - Rugosa Rose
- 3 - Red Flowering Currant
- 4 - Villosa Lilac
- 5 - Black Eyed Susan
- 6 - Echinacea
- 7 - Blanket Flower
- 8 - Coreopsis
- 9 - Common Wooley Sunflower
- 10 - Russian Sage
- 11 - Heather
- 12 - Hyssop
- 13 - Penstemon
- 14 - Prairie Blazingstar
- 15 - Sedums
- 16 - Stonecrop
- 17 - White and Purple Aster
- 18 - Feather Reed Grass
- 19 - Catmint
- 20 - Joe Pye Weed

Ferrocement Raised Beds

Some garden beds may be ground level, while others will be made from ferrocement - a simple concrete plaster over wire mesh. These curvy, creative beds can take a variety of shapes and are a lot of fun to build. These could be constructed by the school community over several work bees.



Natural Playground Hill

A place to run, climb, balance, and play. The central playing hill has many features:

- Natural climbing structures
- Slide
- Dig zone
- Rocks
- Logs



Loose Parts

Movable raw materials for children to assemble in new and creative ways, these loose parts are part of the playing hill area.



Gathering Nooks

Integrated into the curve of the raised beds, these are spaces for small groups of students to gather and play. Plants create outdoor living rooms, with a sense of privacy and sanctuary. The gathering nook in the Rain Garden features a living willow dome for students to sit under.



Native Plant Garden

A low-maintenance, feral border of flowering and fruiting shrubs and ground covers. All are native to the interior of BC, and many have multiple uses including food and materials for people, and forage and habitat for pollinators and birds.



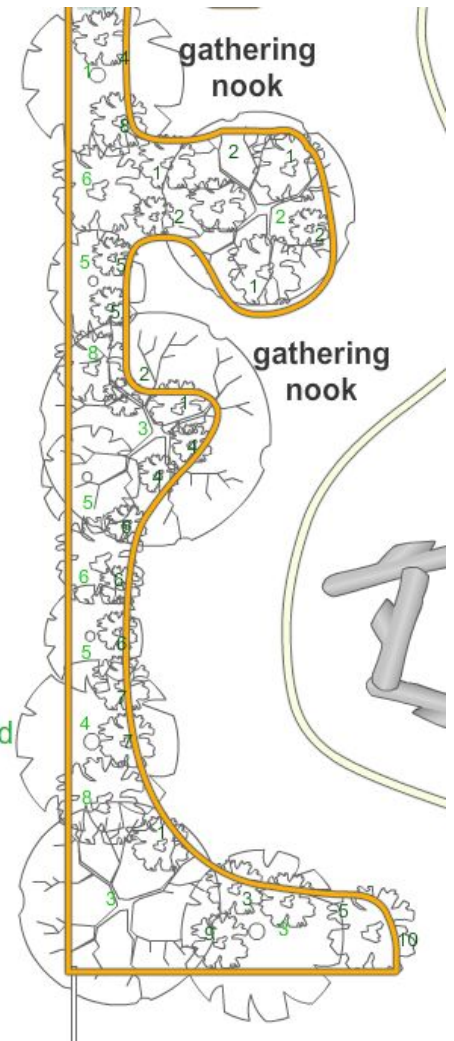
NATIVE PLANT GARDEN

UNDERSTORY

- 1 - Kinnikinnick
- 2 - Silky Lupine
- 3 - Wild Strawberry
- 4 - Brown Eyed Susan
- 5 - Western Yarrow
- 6 - Balsam Sunflower
- 7 - Western Goldenrod
- 8 - Douglas Aster
- 9 - Showy Milkweed
- 10 - Soopalallie

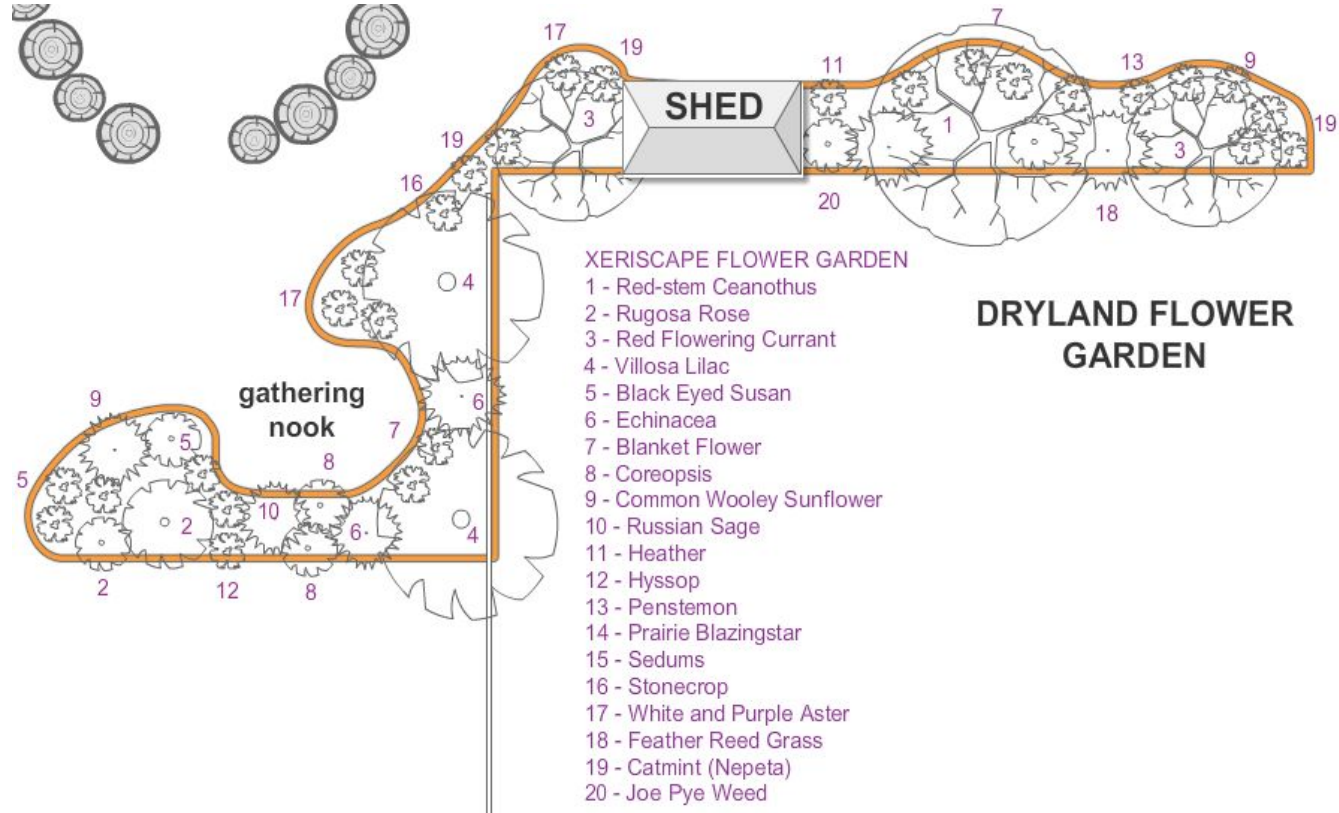
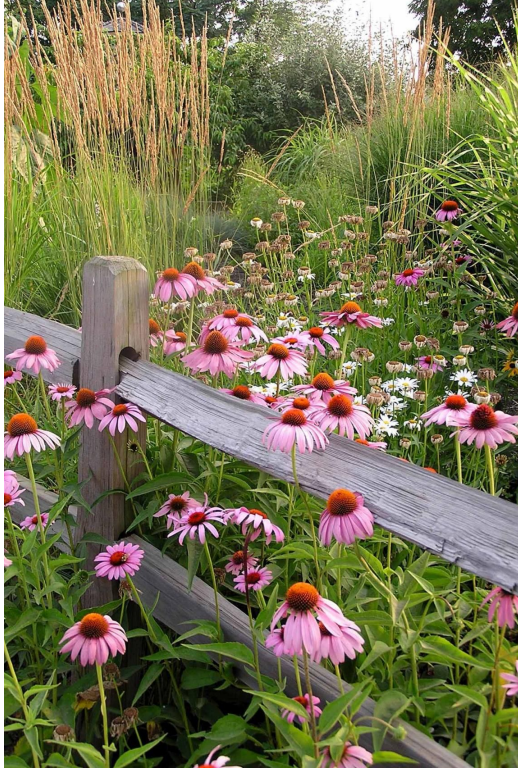
CANOPY

- 1 - Red Osier Dogwood
- 2 - Beaked Hazelnut
- 3 - Blue Elderberry
- 4 - Ocean Spray
- 5 - Saskatoon
- 6 - Tall Oregon Grape
- 7 - Mock Orange
- 8 - Nootka Rose



Dryland / Xeriscape Wildflower Garden

Flowering plants with low water needs in a diversity of colours, textures, and bloom times.

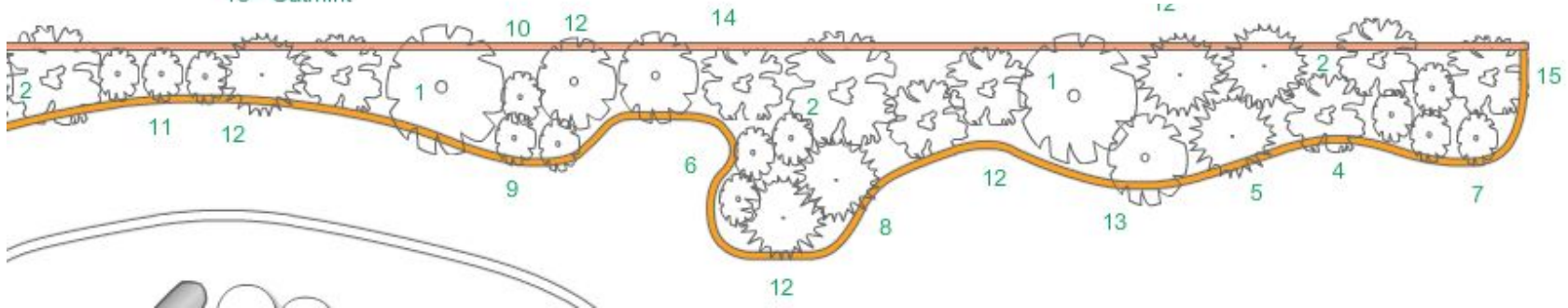


Shady Edible Perennials & Sensory Herb Garden

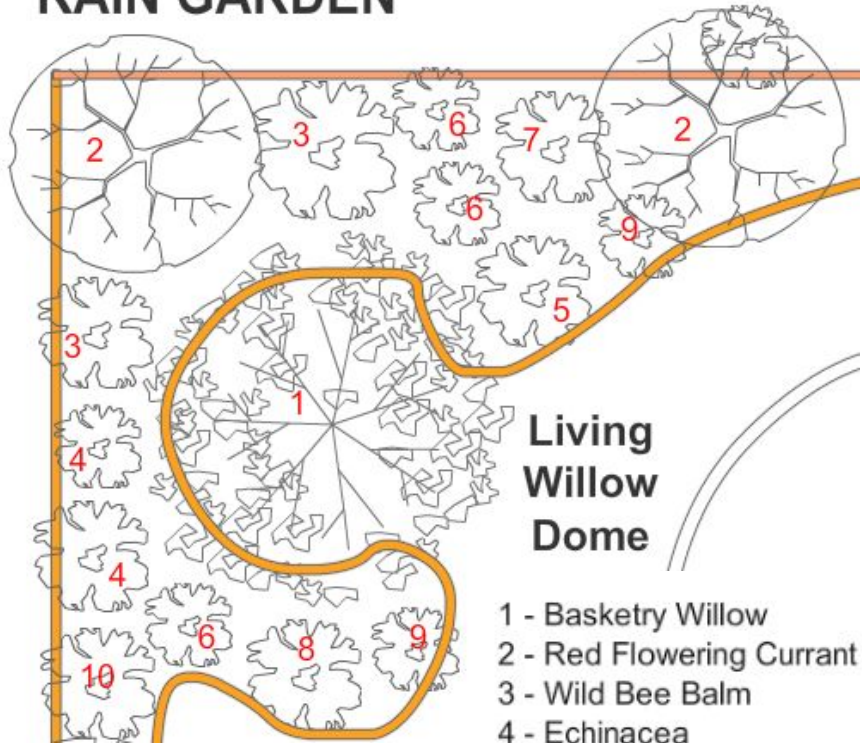
SENSORY SHADE GARDEN

- 1 - Currants
- 2 - High Bush Cranberry
- 3 - French Sorrel
- 4 - Oregano
- 5 - Mint
- 6 - Tarragon
- 7 - Creeping Thyme
- 8 - Lemon Balm
- 9 - Anise Hyssop
- 10 - Walking Onions
- 11 - Chives
- 12 - Purple and White Sage
- 13 - Lavender
- 14 - Catnip
- 15 - Catmint

Plants to touch, smell, eat, look at, and interact with, this is the bed every child has to run past to enter the garden. A mosaic of textures and shades of green, many of which flower in summer and provide valuable pollinator forage. Partial shade under the canopy of overhead maple trees.



RAIN GARDEN



Living Willow Dome

- 1 - Basketry Willow
- 2 - Red Flowering Currant
- 3 - Wild Bee Balm
- 4 - Echinacea
- 5 - Daylily
- 6 - Switchgrass
- 7 - Autumn Sneezeweed
- 8 - Aster
- 9 - Columbine
- 10 - Western Honeysuckle

This garden is located at the lowest point in the landscape, and it's function is to collect and infiltrate rainwater captured across landscape.



Living Willow Dome

Woven dome of basketry willow over the gathering nook in the rain garden. The willow absorbs excess surface water at the lowest point in the landscape, while creating a magical hideaway for students.



What a transformation it will be!

